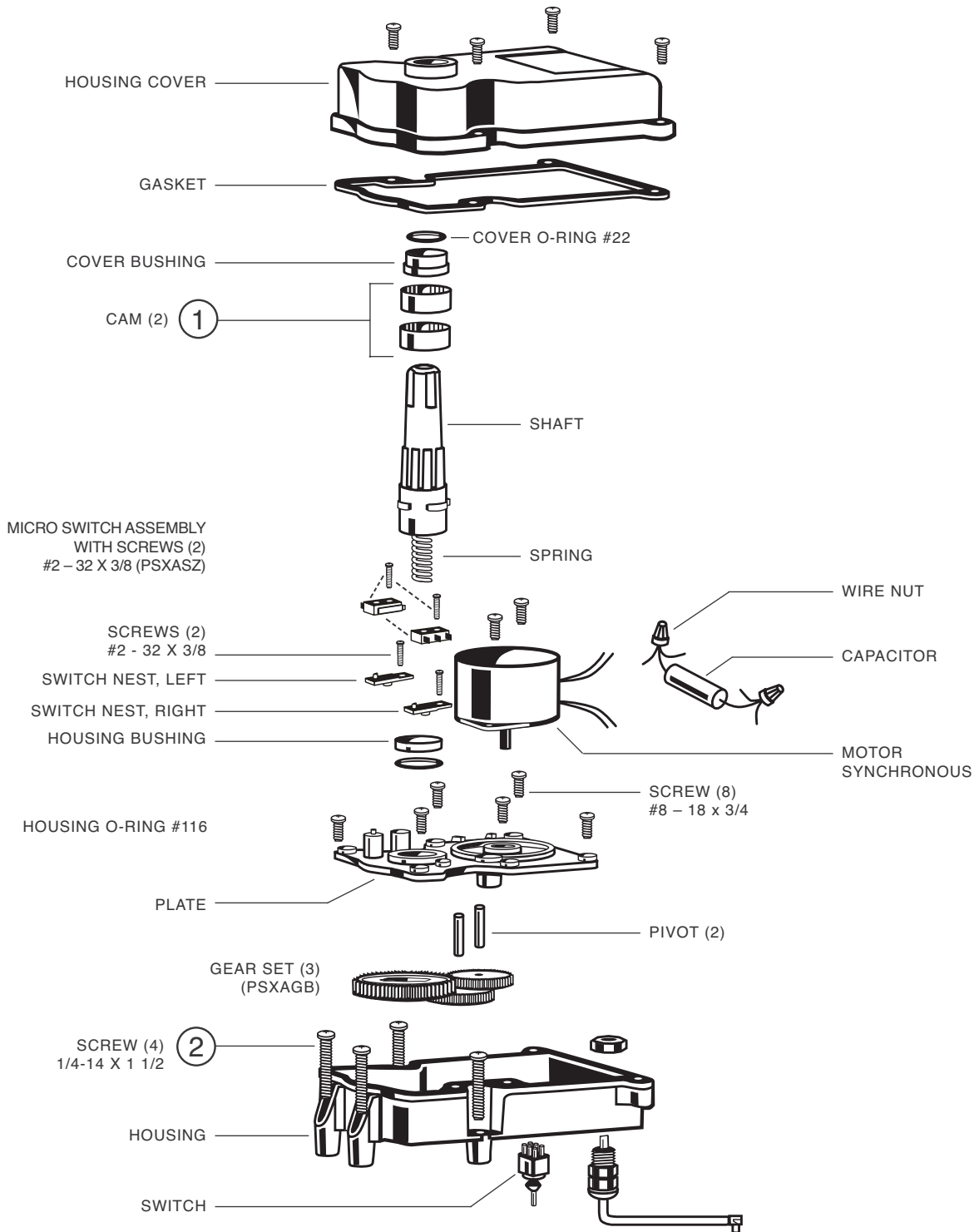




# Goldline Actuator®

GVA REPLACEMENT PARTS

**GOLDLINE**  
CONTROLS®  
A HAYWARD COMPANY



## Parts Listing

Ref. No.	Part No.	Description	Ctn Qty.	No. Req'd	List Price
1	GLX-GVA-2CAM	Cams (Set of 2)	1	1	\$10.80
2	GLX-GVA-4SCR	Mounting Screws (Set of 4)	1	1	11.88

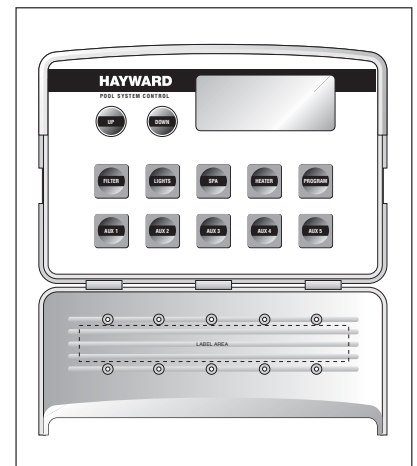
# PSC 2100 Series - Pool/Spa Controls

REPLACEMENT PARTS



## PSC 2110 Series Parts Listing

Part No.	Description	Application	Ctn. Qty.	List Price
PSC2001	10-Button indoor/outdoor	Master Controller Replacement for PSC2100, 2101	1	<b>\$499.00</b>
PSC2001B	10-Button RF Ready Indoor/Outdoor Master Controller	RF Wireless Master Controller Replacement	1	<b>519.00</b>
PSC2003	4-Button Spa Side Controller w/100' Cable		1	<b>310.00</b>
PSC2004	40 Amp Expander Board w/Connector Cable	Expander Board Replacement	1	<b>80.00</b>
PSC2005	4-Button Spa Side Controller w/50' Cable		1	<b>249.00</b>
PSC2006	PCB Board w/Screws	PCB Board Replacement for PSC2100, 2101	1	<b>600.00</b>
PSC2006B*	PCB Board w/Screws	PCB Board Replacement for PSC2104, 2105, 2106, 2109	1	<b>629.00</b>
PSC2007	pH Sensor Kit w/Board		1	<b>350.00</b>
PSC2008	Chemical Sensor Kit w/Board (ORP sensor & pH sensor)		1	<b>620.00</b>
PSC2021	50 Amp GFCI Circuit Breaker w/Enclosure		1	<b>225.00</b>
PSC2022	Water Sensor Kit	Water Sensor Replacement	1	<b>96.00</b>
PSC2023	Air Sensor Kit	Air Sensor Replacement	1	<b>88.00</b>
PSC2031	RF Wireless Spa Remote Controller	RF Wireless Remote Spa Controller Replacement	1	<b>244.00</b>
PSC2034	Main PCB Board Retrofit Wireless Upgrade Chip		1	<b>74.00</b>
PSC2038	4-Button Spa Side Controller w/200' Cable		1	<b>432.00</b>
PSC2107	Deluxe RF Wireless Master Controller Upgrade Kit (Cradle & Receiver)		1	<b>982.00</b>
PSC2108	Deluxe RF Wireless Spa Remote Controller Upgrade Kit (Remote Controller & Receiver)		1	<b>490.00</b>



**PSC2001**

CONTROLS

**NOTE:** PSC2215/2216/2217 will only work with "B" revision models and parts.

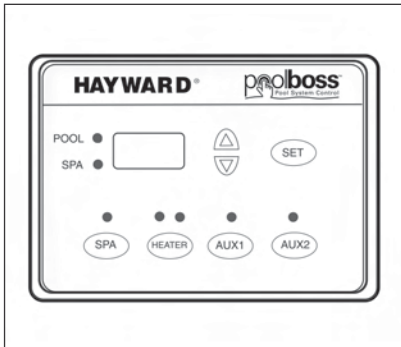


# Pool Boss – Pool/Spa Controls

## REPLACEMENT PARTS

### Pool Boss Replacement Parts Listing

Model Number	Description	Ctn. Qty.	List Price
PSC2201	Pool Boss w/o breaker	1	<b>\$1,201.60</b>
PSC2201B	Pool Boss w/o breaker	1	<b>1,201.60</b>
PSC2202	Pool Boss w/breaker	1	<b>1,313.40</b>
PSC2202B	Pool Boss w/breaker	1	<b>1,313.40</b>
PSC2205	PSC2201 w/o actuator	1	<b>935.70</b>
PSC2207	PSC2202 w/o actuator	1	<b>1,069.00</b>
PSC2211	3 HP Relay	1	<b>80.00</b>
PSC2212	2-Speed Pump Kit	1	<b>80.00</b>
PSC2213	Time Clock	1	<b>80.00</b>
PSC2214	Fiber Optics Kit	1	<b>88.00</b>
PSC2215	Spa Panel w/50' Cord	1	<b>222.00</b>
PSC2216	Spa Panel w/100' Cord	1	<b>247.00</b>
PSC2217	Spa Panel w/150' Cord	1	<b>271.00</b>
PSC2221	Freeze Protection Kit	1	<b>111.00</b>
PSC2222	Water Temp Kit	1	<b>88.00</b>
PSC2223	Master Panel	1	<b>350.00</b>
PSC2223B	Master Panel for PSC2201B/PSC2202B	1	<b>350.00</b>
PSC2224	Circuit Board	1	<b>211.00</b>
PSC2224B	Circuit Board for PSC2201/PSC2202B	1	<b>211.00</b>
PSC2225	Transformer	1	<b>86.00</b>
PSC2225B	Transformer for PSC2201B/PSC2202B	1	<b>86.00</b>
PSC2226	Circuit Breaker Base	1	<b>180.00</b>
PSC2227	Ground Bar	1	<b>42.00</b>



Pool Boss

Controls

**NOTE:** If an older version of Pool Boss needs to be equipped with a spa side panel, then the control board and master panel must be changed to "B" version.

**PRO LOGIC**

Part No.	Description	List Price
GLX-PCB-PRO	Main PCB, Pro Logic, all versions, all date codes	<b>\$788.40</b>
GLX-PL-LOC-P-4	Display, Local, Pro Logic, P-4	<b>399.60</b>
GLX-PL-LOC-PS4	Display, Local, Pro Logic, PS-4	<b>594.00</b>
GLX-PL-LOC-PS8	Display, Local, Pro Logic, PS-8	<b>626.40</b>
GLX-PL-LOC-PS16	Display, Local, Pro Logic, PS-16	<b>648.00</b>

**AQUA LOGIC**

GLX-PCB-MAIN	Main PCB, Aqua Logic, all versions, all date codes	<b>\$712.80</b>
GLX-PCB-EXP	PCB, Expansion Unit for PS-16	<b>712.80</b>
GLX-LOCAL-P-4	Display, Local, P-4/PS-4 before date code 0311	<b>248.40</b>
GLX-LOCAL-PS-4	Display, Local, P-4/PS-4 before date code 0311 & later	<b>480.60</b>
GLX-LOCAL-PS-8	Display, Local, PS-8, all	<b>502.20</b>
GLX-LOCAL-PS-16	Display, Local, PS-16, all	<b>534.60</b>

**AQUA RITE PRO**

GLX-CTL-AR-PRO	Control Unit, Aqua Rite Pro	<b>\$1,188.00</b>
GLX-PCB-AR-PRO	Main PCB, Aqua Rite Pro	<b>756.00</b>
GLX-AR-PRO-MEM	Display, Membrane Key Pad, dead front	<b>318.60</b>

**AQUA RITE**

GLX-CTL-RITE	Control Unit, Aqua Rite	<b>\$1,074.60</b>
GLX-PCB-RITE	Main PCB, Aqua Rite	<b>361.80</b>
GLX-PCB-DSP	Display PCB, Aqua Rite	<b>145.80</b>

**AQUA TROL**

GLX-CTL-TR-HP	Control Unit, Aqua Trol – HP, straight blade	<b>\$961.20</b>
GLX-CTL-TR-HP-T	Control Unit, Aqua Trol – HP, twist lock	<b>961.20</b>
GLX-CTL-TR-RJ	Control Unit, Aqua Trol – RJ, straight blade	<b>988.20</b>
GLX-CTL-TR-RJ-T	Control Unit, Aqua Trol – RJ, twist lock	<b>988.20</b>
GLX-RJ-ELBOW	Fitting, Return Jet	<b>44.28</b>

**SENSE AND DISPENSE**

GLX-PROBE-ORP	Probe, ORP Replacement	<b>\$345.71</b>
GLX-PROBE-PH	Probe, pH Replacement	<b>345.71</b>
GLX-FLOW-CELL	Flow Cell, Sense and Dispense only	<b>156.60</b>
GLX-SD-ELEC-MOD	Sense and Dispense Electronics Module	<b>329.40</b>

**CHLORINATOR CELLS**

GLX-CELL-3-W	Turbo Cell 15K gallons, 1 year warranty	<b>\$295.48</b>
GLX-CELL-9-W	Turbo Cell 25K gallons, 1 year warranty	<b>492.46</b>
GLX-CELL-5-W	Turbo Cell 20K gallons, 1 year warranty	<b>490.00</b>
GLX-CELL-5	Turbo Cell, 20K gallons, 3 year warranty	<b>565.00</b>
GLX-CELL-15-W	Turbo Cell, 40k gallons, 1 year warranty	<b>690.00</b>
GLX-CELL-PIPE	Straight pipe placeholder for Turbo Cell	<b>39.88</b>

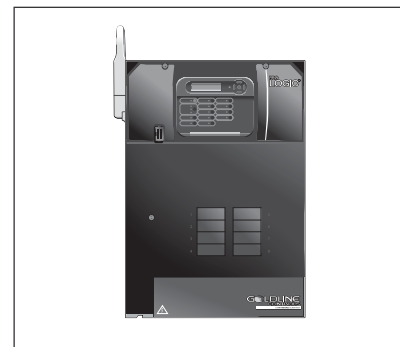
**NOTE: Turbo Cell Replacements available – see pages 51, 62, 53, 65**

**COMMON PARTS**

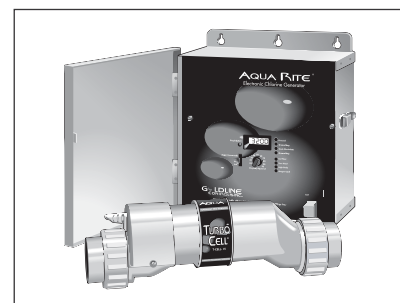
GLX-DRK	Rectifier upgrade	<b>\$54.00</b>
GLX-FLO-RP	Flow switch (15' cable, no tee)	<b>170.64</b>
GLX-FLO-RP-25	Flow switch (25' cable, no tee)	<b>181.44</b>
GLX-FLO-T	Tee for flow switch	<b>20.52</b>
GLX-XFMR	Transformer	<b>181.44</b>
GLX-CELL-UNION	Union, nut & tailpiece, 2"	<b>22.68</b>
GLX-R-10PK	Rectifier, 10 pack	<b>181.44</b>
GLX-F20-10PK	Fuse kit, 20A, 10 pack (for Aqua Rite/Trol before 11/04)	<b>48.60</b>
GLX-F20A-10PK	Fuse kit, 20A/yellow, 10 pack (all Aqua Logic/Rite/Trol after 11/04)	<b>55.08</b>
GLX-F3A-10PK	Fuse kit, 3A/violet, 10 pack (Aqua Logic only)	<b>55.08</b>
GLX-FUSE-20	Fuse holder kit (fuse holder & wires for Rite/Trol before 11/04)	<b>27.00</b>
GLX-PC-12-KIT	Temperature sensor w/15' leads & hose clamp	<b>42.55</b>
GLX-RF-EXTEND	AQL2-BASE-RF extension 50'	<b>85.10</b>
GLX-RELAY	Relay, 3 HP	<b>87.75</b>
GLX-PWR-x	Power Supply, wall plug-in, for wireless remotes X = W (White), B (Black)	<b>29.16</b>
GLX-GVA-2CAM	Cams for GVA Valve Actuator (Set of 2)	<b>10.80</b>
GLX-GVA-4SCR	Screws (4) for mounting GVA-24 Valve Actuator	<b>11.88</b>

**ACCESSORIES**

GLX-SALTMETER	Salt meter, handheld, digital	<b>\$181.44</b>
GLX-CAL-SOL	Calibration solution for salt meter, 3200ppm	<b>10.80</b>
GLX-CELLSTAND	Cleaning stand, for all Turbo cells	<b>48.60</b>



**Pro Logic**



**Aqua Rite**

Goldline Controls