

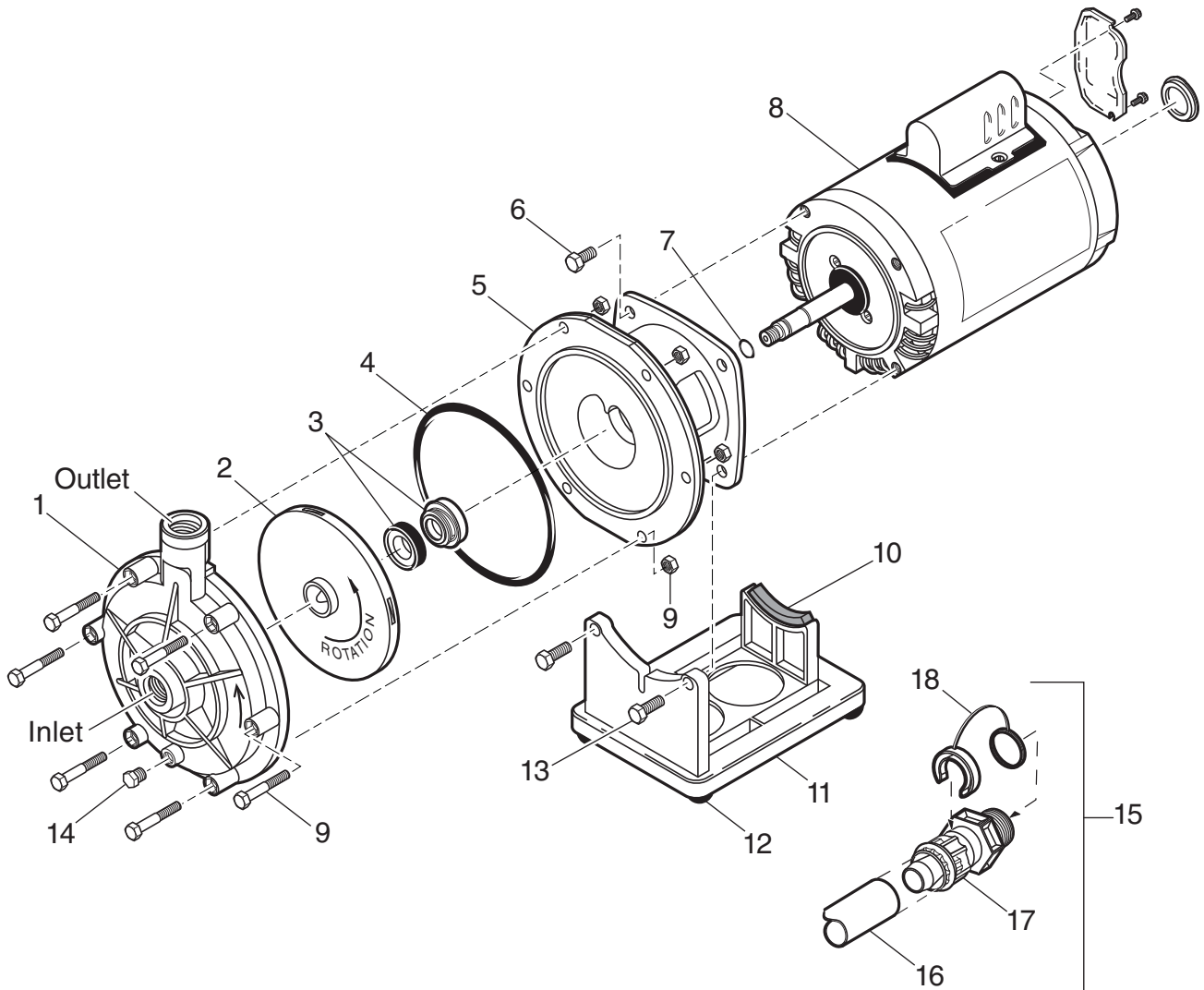
Booster Pump Parts

Polaris® Booster Pump with 60 Hz Motor

Part# PB4-60

Key No.	Part No.	Description	Qty.	List Price
1	P5	Volute (Includes Drain Plug)	1	\$39.66
2	P15*	Impeller	1	\$21.65
3	P55	Seal, Stainless Steel Cup/Spring	1	\$15.65
4	P95*	O-Ring, Bracket	1	\$9.56
5	P10	Bracket	1	\$39.66
6	P35	Bolt, Stainless, Bracket to Motor	2	\$0.78
7	P40	O-Ring for Shaft	1	\$1.61
8	P61*	Motor, ¾ HP, Threaded Shaft, 60 Hz	1	\$241.00
9	P25	Bolt/Nut, Stainless for Volute to Bracket	6	\$1.25

Key No.	Part No.	Description	Qty.	List Price
10	P80	Rubber Strip, Motor/Bracket	1	\$1.09
11	P70	Pump Stand w/ Feet, Strip	1	\$41.57
12	P75	Rubber Feet	4	\$0.54
13	P65	Bolt, SS, Stand to Bracket and Motor	1	\$0.87
14	P20	¼" NPTM Plug, Plastic	2	\$1.63
15	P17	Installation Kit, Softube® Quick Connects	1	\$34.18
16	P19	Pump Hose, 6 ft., Flexible Reinforced	1	\$21.53
17	P133	Softube Quick Connect	4	\$5.79
18	P21	Pump Quick Connect Retainer	4	\$2.90

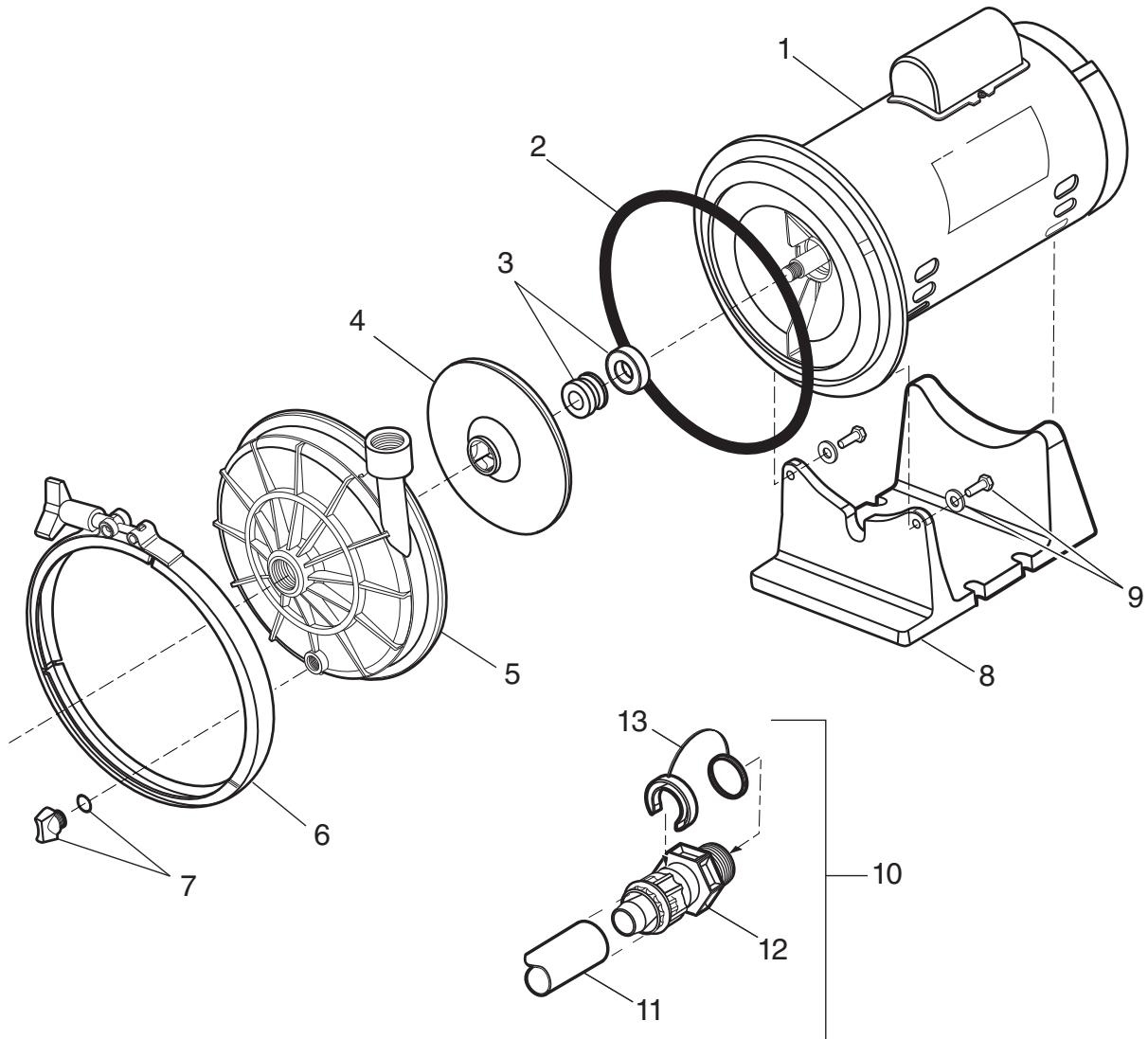


Polaris® Halcyon® Booster Pump with Quiet 60 Hz Motor

Part# PB4-60Q

Key No.	Part No.	Description	Qty.	List Price
1	P64	¾ HP Motor – Seal Plate Assembly	1	\$347.20
2	P85	O-Ring, Seal Plate	1	\$12.14
3	P84	Seal, Ceramic/Spring	1	\$18.24
4	P16	Impeller, 60 Hz	1	\$20.35
5	P82	Volute (Includes Drain Plug w/ O-Ring)	1	\$40.79
6	P87	Band Clamp	1	\$45.83
7	P88	½"-20 UNF Drain Plug w/ O-Ring	1	\$2.93

Key No.	Part No.	Description	Qty.	List Price
8	P86	Pump Stand	1	\$45.83
9	P91	¼-20 x .75" Bolt w/ Washer	2	\$2.93
10	P17	Installation Kit, Softube® Quick Connects	1	\$34.18
11	P19	Pump Hose, 6 ft., Flexible Reinforced	1	\$21.53
12	P133	Softube Quick Connect	4	\$5.79
13	P21	Pump Quick Connect Retainer	4	\$2.90



Distributor Minimum Order Quantities for Polaris Booster Pumps on next page