



Plastic ProNiche

Plastic ProNiche

Plastic, large and small niches for gunite pools and spas.

Features:

- Injection molded of high strength PVC for corrosion free performance
- 1" rear outlet with 45° sweep elbow fitting and ¾" reducer
- 1" NPT internal plug for pressure testing conduit line
- Rebar tie-backs for simple installation
- Plastic plaster shield for protection during construction
- Internal and external bonding lugs

Part No.	Description	Dimensions	List Price
PLNICLRG	Large Plastic Gunite Niche	8.75" Depth, 9.85" Dia.	\$64.20
PLNICSM	Small Plastic Gunite Niche	7.23" Depth, 5.33" Dia.	\$55.44



Stainless Steel ProNiches

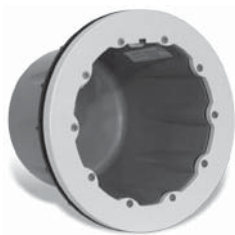
Stainless Steel ProNiche

Stainless steel, large and small niches for all gunite pools and spas.

Features:

- Rear or side outlets in 1" with ½" and ¾" reducers
- Internal and external bonding/grounding lugs for use with either metal or plastic conduit.
- Room for 4' of coiled cable
- Plastic plaster shield for protection during construction

Part No.	Description	Dimensions	List Price
SSNICLRG1R	Large Stainless Steel Gunite Niche 1" Rear Outlet	7.75" Depth, 9.76" Dia.	\$79.23
SSNICLRG1S	Large Stainless Steel Gunite Niche 1" Side Outlet	7.75" Depth, 9.76" Dia.	\$79.23
SSNICSM1R	Small Stainless Steel Gunite Niche 1" Rear Outlet	6.97" Depth, 5.33" Dia.	\$72.81
SSNICSM1S	Small Stainless Steel Gunite Niche 1" Side Outlet	6.97" Depth, 5.33" Dia.	\$72.81



Plastic ProNiche for Vinyl/Fiberglass

Plastic ProNiche for Vinyl/Fiberglass

Plastic, large niche for Vinyl or Fiberglass pools.

Features:

- 1" rear outlet with 45° sweep elbow fitting and ¾" reducer
- Mounts and seals like vinyl inlet fittings with zero wall panel exposure
- Injection molded of high strength PVC for corrosion free performance
- 1" NPT plug for pressure testing conduit line
- Internal and external bonding lugs

Part No.	Description	Dimensions	List Price
PLNICVFLRG	Large Plastic Niche for Vinyl/Fiberglass pools	8.75" Depth, 11" Dia.	\$128.40